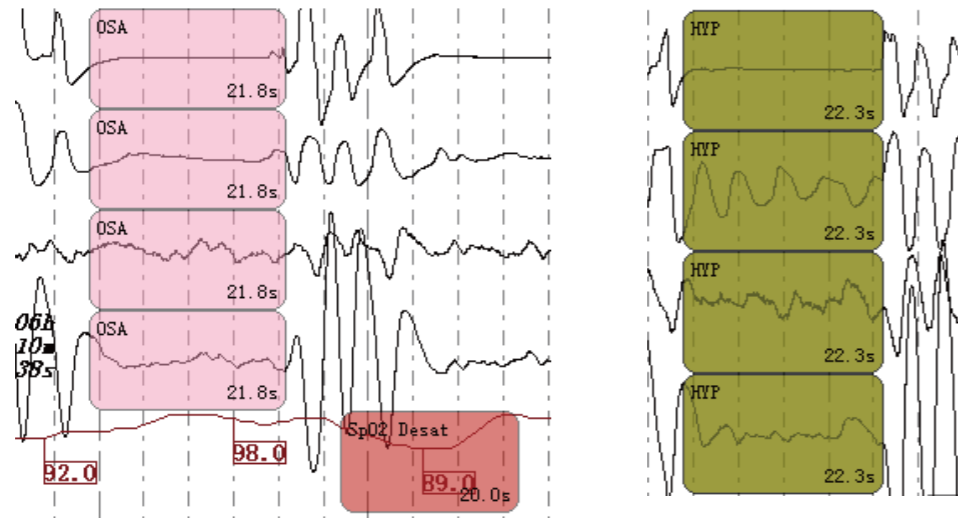


More accurate analysis:

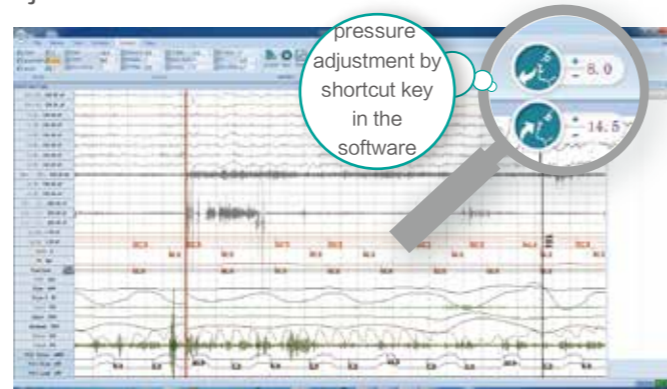
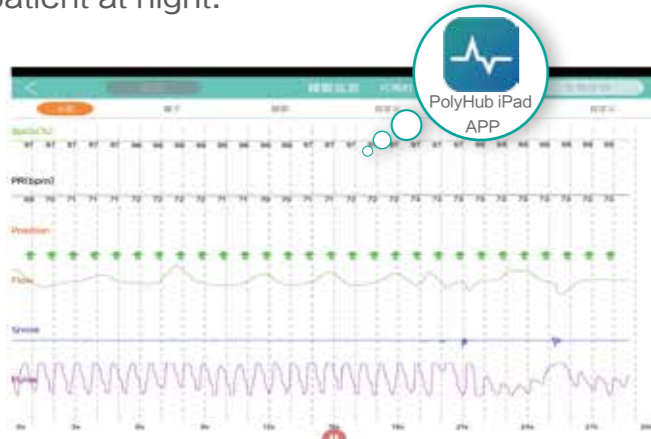
The event in the left picture can be identified as OSA according to the waveform and duration time; while if ignore the second line of thermal airflow waveform in the right picture, it can easily be identified as OSA according to its characteristics. However, the thermal airflow waveform in the second line fluctuates obviously by detecting the temperature difference, so it should be HYP.



Extended functions:

The intelligent APP wirelessly displays the waveform in real time, which is convenient for staff to check the quality of the collected signals and for doctors to keep abreast of the state of sleep and respiratory condition of the patient at night.

When choose real-time connection, synchronous PAP titration can be realized. Different therapy models are alternative and treatment pressure can be adjusted through shortcut key in the software. In addition, the gain and filtering of the channel can also be adjusted as needed.



The cloud-based data management platform provides simple and reliable technical support; patient data can be transmitted and displayed in real time, and doctors can use the platform to perform online analysis of patient data so as to achieve more timely and efficient patient management. The platform also can provide professional sleep center powerful and remote sleep diagnosis function.



Polypro H2 Portable Sleep Diagnostic System

- A sleep monitoring device with overall respiratory channels
- A level III sleep diagnostic product compliant with AASM guidelines
- Provides more accurate diagnosis of sleep-related respiratory disease

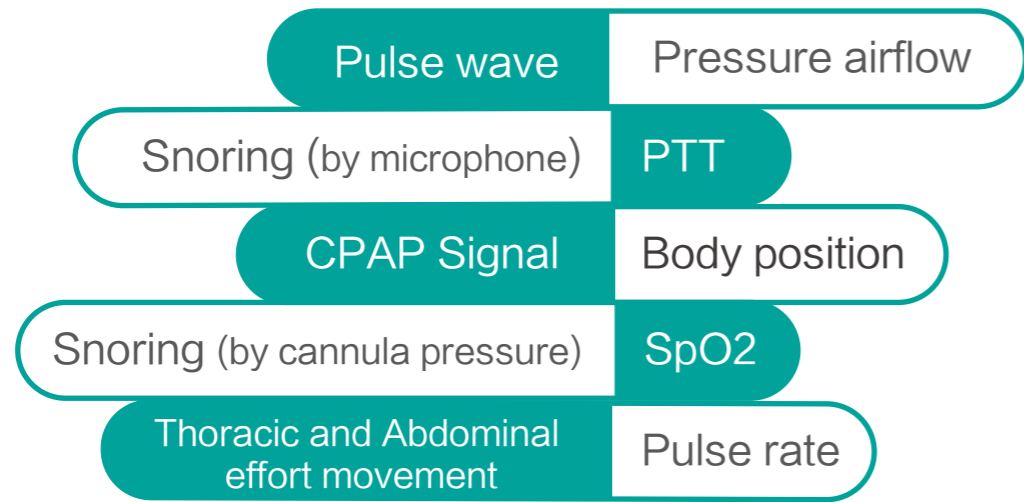


BMC (Tianjin)Medical Co., Ltd.

Add:3/F, Building No.4, No.1 Xinxing Road, Wuqing District, 301700Tianjin, PEOPLE' S REPUBLIC OF CHINA
Tel: +86-22-8293 9881 Fax: +86-22-8293 9881 ext.810 en.bmc-medical.com

Polypro H2 Portable Sleep Diagnostic System

Configuration



Easy to wear

The sensor interface is arranged in the vicinity of the device, which is convenient for identifying and connecting to prevent the clinic staff from misoperation and improve work efficiency.

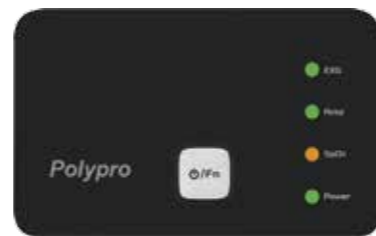


More accurate diagnosis

Dual configuration of breathing and snoring signals better meet the needs of clinical and scientific research and ensure the accuracy of signal sources.

Impedance light function

To indicate if the sensor is successfully connected (if the wearing is incorrect, the indicate light is yellow).



Integrated RIP technology

More convenient for clinical recognition of obstructive respiratory contradictory movements and accurate classification of respiratory events.

Analysis software

More easy to operate:

The integrated design of acquisition, analysis and data management is handier for doctors



Acquisition

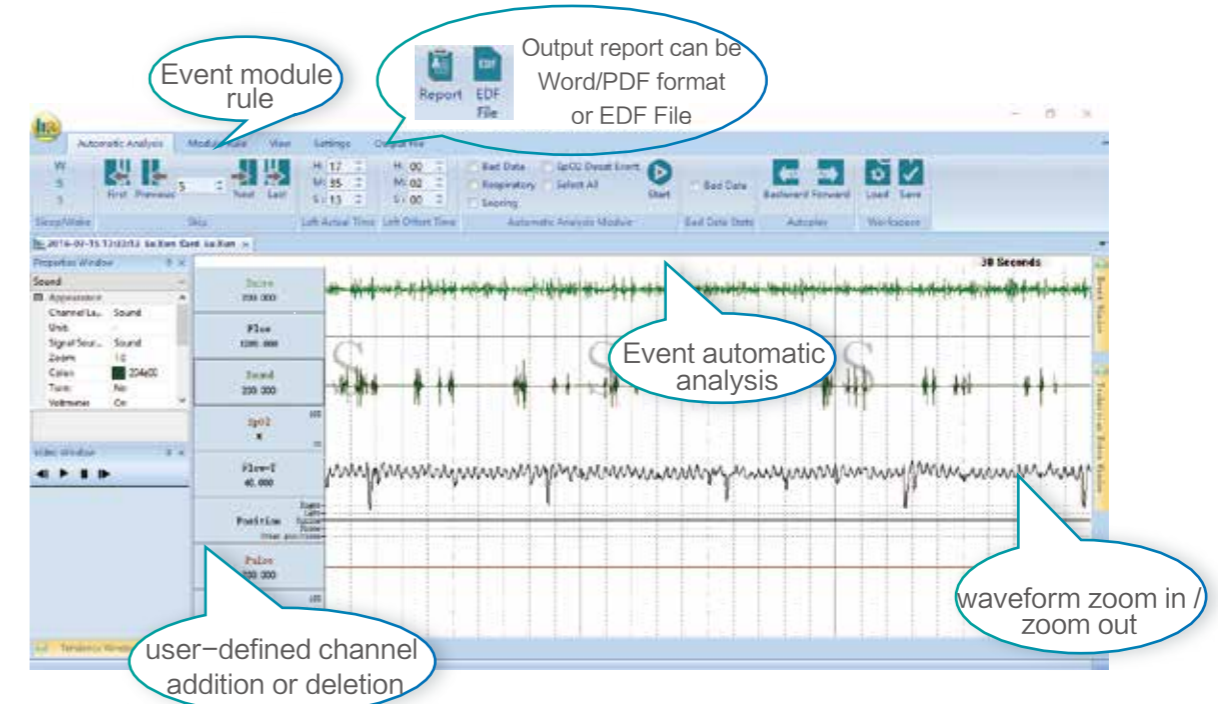


Analysis



Data Management

Rational analysis module layout makes all function options clear at a glance:



Report format:

With international universal format, the diversified and illustrated analysis report is convenient for reading. It also can be customized according to the needs of doctor, more humanized.

